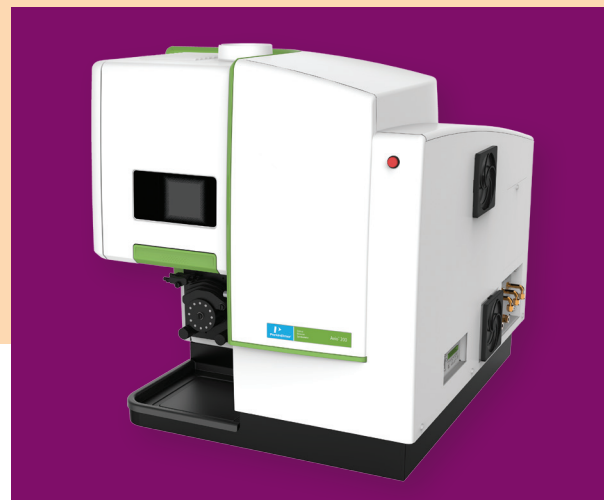


Avio 200 ICP Optical Emission Spectrometer

ICP-Optical Emission Spectroscopy



The PerkinElmer Avio™ 200 is a compact, bench-top, dual view, vertical plasma ICP-OES engineered to handle even the most difficult, high-matrix samples without dilution, delivering a whole new level of performance and flexibility to ICP.

Spectrometer Specifications

Double Spectrometer

The Avio 200 ICP-OES uses a unique double-spectrometer optical system. This design results in a high-speed, high-light-throughput optical system offering excellent resolution, all in a compact system. The sealed optical system can be purged with nitrogen for low UV (165-190 nm) performance.

Echelle Spectrometer

The high-dispersion echelle spectrometer has a focal length of 0.3 meter and a Stigmatic Littrow configuration. The echelle grating used for dispersion has 79 lines/mm with a blaze angle of 63.8 degrees.

Parameters

The spectral range is 165-900 nm with resolution of < 0.009 nm @ 200 nm.

Plasma Viewing

The system incorporates a vertically oriented plasma with complete dual-viewing optics under computer and software control. Any wavelength can be used in the radial, axial or mixed viewing modes in a single method. With the patented Dual View capabilities of the Avio 200 system, viewing of the plasma is accomplished by computer control of a mirror located in the optical path and allows selection of axial or radial view and adjustment of the plasma viewing in both the vertical and horizontal planes.

Detector

The UV-sensitive, dual backside-illuminated Charge-Coupled Device (CCD) array detector is cooled directly using a single-stage integrated Peltier cooler operated at approximately -8 °C. The detector has two photosensitive segments containing 176 by 128 pixels. One section is used for analytical measurements, and the other is a wavelength reference section. The CCD-array detector collects both the analyte and the nearby background information in a single spectrum, allowing for simultaneous background correction and providing improved precision and analytical speed.

Dynamic Wavelength Stabilization™

The wavelength reference section of the detector monitors a small portion of the neon spectrum in order to create a dynamic wavelength scale used to actively correct wavelength positions. The resultant wavelength accuracy and reproducibility allows direct 'on-peak' measurements rather than time-consuming peak-search methods used in sequential ICP systems.

ICP System Specifications

RF Generator

The Avio 200 ICP-OES features a fourth-generation 40 MHz, free-running solid-state RF generator, adjustable from 1000 to 1500 watts, in 1 watt increments. The power efficiency is greater than 81% with < 0.1% variation in output power stability. True Power Control maintains the plasma power at the set point, even when changing sample matrices. The compact RF supply meets all FCC certification requirements for RF emission (Part 18 of FCC rules and regulations) and complies with EC and Class A requirements.

Its unique Flat Plate™ plasma technology generates and maintains a robust, matrix-tolerant plasma with approximately half the argon consumption of helical load-coil systems.

Plasma Ignition and Extinction

Plasma ignition is computer-controlled and totally automated. The plasma can be ignited automatically at a user-determined time and turned off automatically after an analysis.

Safety Interlocks

For user safety and system protection, the system constantly monitors water flow, shear gas pressure, argon pressures, sample-compartment door closure and plasma stability, and displays the interlock status on the computer screen as graphic symbols. If an interlock is interrupted, the plasma will immediately and safely shut down.

Cooling Water

A water-recirculating cooling system is required, with approximately 4 L/min flow capacity at 310 to 550 kPa and a temperature between 15 °C and 25 °C.

Gas Flow Controls

Argon Flow

Computer-controlled solenoid valves are used to regulate the flow automatically within the range of 8-20 L/min in 1 L/min increments for plasma argon and 0 to 2.0 L/min in 0.1 L/min increments for auxiliary argon. A mass-flow controller is supplied with all systems for the nebulizer argon flow and is variable between 0 and 2.0 L/min in 0.01 L/min increments.

PlasmaShear™

A compressed-air shear gas (18-25 L/min) is used to remove the plasma tail from the optical path, minimizing interferences and extending the dynamic range. PlasmaShear provides a maintenance-free and lower-cost approach to removing the cooler plasma zone.

Sample Introduction System

Torch/Torch Mount

A unique, demountable torch design using one-piece quartz tubing for plasma and auxiliary gas flow is supplied. The standard torch includes a 2.0-mm i.d. alumina injector for full corrosion resistance to all acids, including hydrofluoric and aqua regia. A variety of other injectors are available. The externally mounted spray chamber is integrated into an easily removed sample-introduction cassette. The sample-introduction cassette can be adjusted (with the plasma on) for maximum performance in different matrices. No tools are required for torch or sample-introduction cassette removal.

Spray Chambers

Instruments can be ordered with a Ryton® HF-resistant Scott-type or a glass cyclonic spray chamber. A variety of other spray chambers are available.

Nebulizers

The Avio 200 can be ordered with a cross-flow or glass concentric nebulizer. The cross-flow design with GemTips™ is corrosion-resistant (sapphire/ruby tips in a PEEK body). The system can routinely handle 50% (v/v) solutions of HCl, HNO₃, H₂SO₄, H₃PO₄, 20% (v/v) HF, and 30% (w/v) NaOH. Additional nebulizers are available.

Peristaltic Pump

The integrated four-channel, computer-controlled pump has variable speeds from 0.2 to 7 mL/min in 0.1 mL/min increments, using 0.76 mm (0.030 in.) i.d. tubing. Software features include FastPump™ and SmartRinse™, which dramatically improve the sample rinse-out and analysis times.

Spares Kit

A spares kit of common replacement items is included.

Physical Data – Instrument

Power

One 200-230 VAC, 20A line, 2800 VA, single phase, 50/60 Hz (±1%)

Dimensions

65 x 81 x 76 cm (W x H x D), 132 kg

Environmental

The instrument will operate with a laboratory temperature between 15 and 35 °C (59-95 °F). For optimum instrument performance, the room temperature should be controlled at 20 ±2 °C.